



IRW-860 WDR IR Color e III IR LED Array Camera (SONY)



EXview HAD CCD II SONY-ICX673AKA

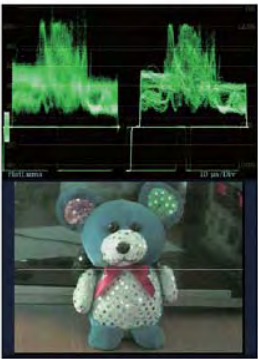


Third Generation IR LED Array

WDR-700TVL
3.6~16mm

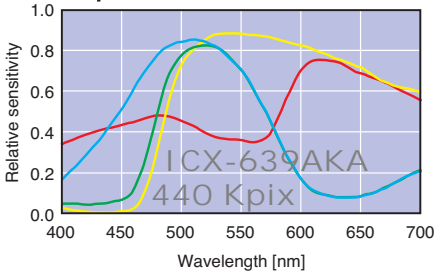


SENS-UP OFF



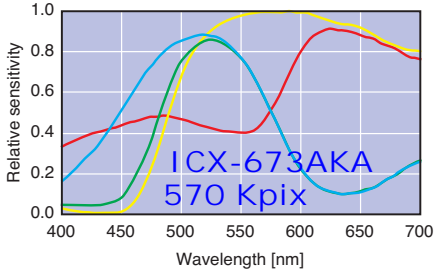
SENS-UP ON

Super HAD CCD II



↓ +5dB

EXview HAD CCD II



- ◆ 1/3" Digital Wide Dynamic Infrared Camera (Sony)
- ◆ Color:700TVL, B/W:800TVL, 0 Lux (IR LEDs)
- ◆ Multi-Language OSD Control
- ◆ WDR Digital Powerful 128X WDR (52dB)
- ◆ Anti-Headlight (HLC), Intelligent selectable BLC
- ◆ 2D Noise Reduction, Anti-Flicker..Color Rolling suppress
- ◆ Mosaic Privacy Mask
- ◆ Advanced Motion Detection Function
- ◆ Picture Quality Adjustable (Contrast/Sharpness/Hue/Gain)
- ◆ Double Glass Lens for Avoiding Halos & Blur
- ◆ HD Aspherical Lens (f=3.6~16/F1.2mm, Horiz. Angle of view:78~12°)
- ◆ 3-axis Cable Management Bracket & Water Resistance:IP66

- Min. Illumin.: 0.00015Lux Sens-up, S/N Ratio = 52dB
- White Balance: ATW/ACR/MANUAL(1700K~11,000K)/Push&Hold/Preset & HLC function, Digital Zoom 16x, Day & Night function adjustable,
- Mirror function, Brightness, Contrast, Saturation, Hue
- Power: 12VDC- 95mA / 500mA (IR LED on - regulated by DSP)
- IR - ILLUMINATOR 2pcs. of Gen III IR LED Array. Constant Current IR LED - adjustable
- IR Distance 40~50M

※ Specifications are approximate and subject to change without prior notice